

PALLETSTOR

drive-in racking

SPACE EFFICIENT PALLET STORAGE





Palletstor drive-in racking

Palletstor drive-in racking

provides a highly space-efficient solution to the storage and throughput of palletised goods.

By dispensing with access aisles **drive-in racking** provides a high-density of storage in a given area to increase capacity by some 60-80% over conventional 'aisle' racking.

Pallets are stored on guide rails in the depth of the racking and forklift trucks enter these 'storage lanes' to deposit or retrieve loads.

Access can be from one end (the true 'drive-in' configuration) or from both ends ('drive-through', allowing improved stock rotation).

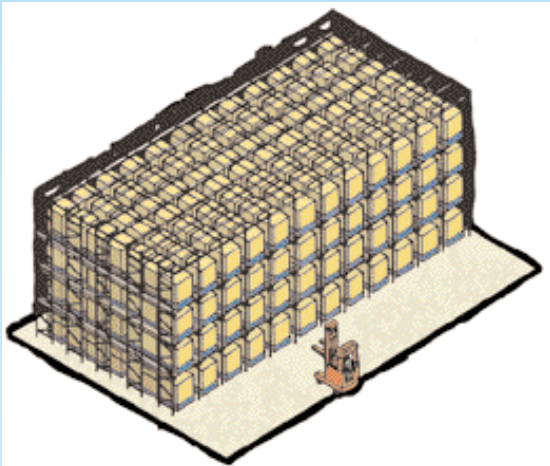
Racking heights up to 11 metres allow the building height and floor area to be used to provide maximum cubic storage space.

Drive-in racking - the ideal solution for optimum space utilisation without requiring specialist handling equipment.



drive-in racking can safely accommodate overhanging loads within the narrow, space-efficient lanes.

operational and technical features

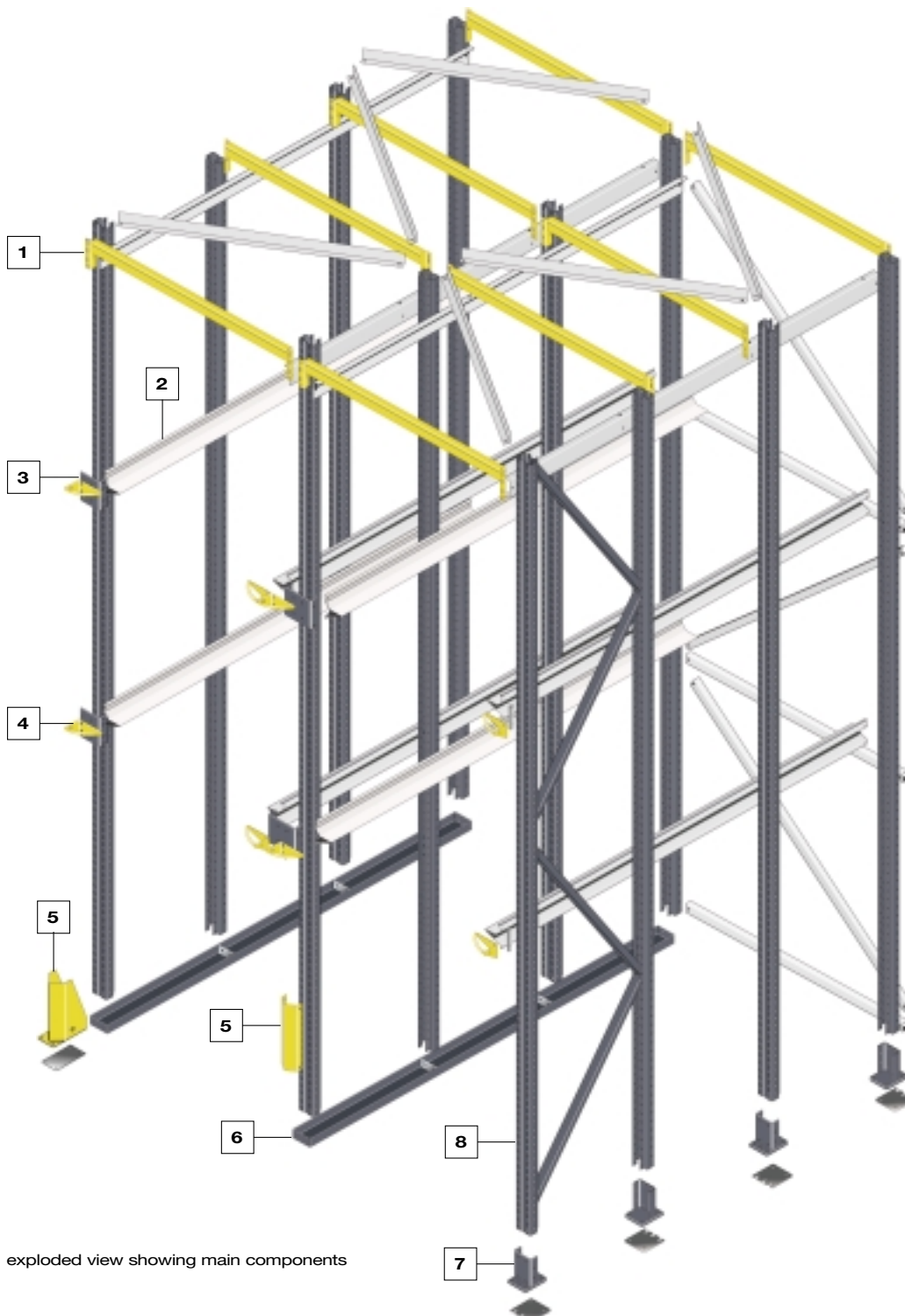


Palletstor Drive-in Pallet Racking operating features - star rating

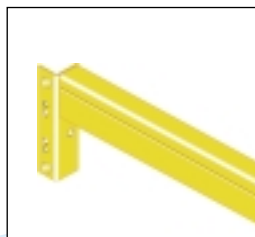
Utilisation of floor area	★ ★ ★ ★ ★
Utilisation of building height	★ ★ ★ ★ ★
Usable cubic storage space	★ ★ ★ ★ ★
Speed of access & throughput	★ ★ ★ ★
Access to individual pallets	★ ★
Stock rotation	★ ★ ★ ★
Specialised handling equipment	None required
Ease & speed of installation	★ ★
Ease of re-location	★
Adjustment of pallet positions	★

Operating features comparison Adjustable Beam Pallet Racking - star rating

Utilisation of floor area	★ ★
Utilisation of building height	★ ★ ★ ★
Usable cubic storage space	★ ★ ★
Speed of access & throughput	★ ★ ★
Access to individual pallets	★ ★ ★ ★
Stock rotation	★ ★ ★ ★
Specialised handling equipment	None required
Ease & speed of installation	★ ★ ★ ★ ★
Ease of re-location	★ ★ ★ ★
Adjustment of pallet positions	★ ★ ★ ★



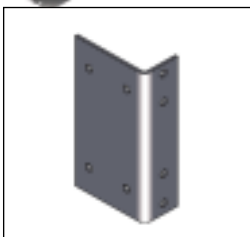
exploded view showing main components



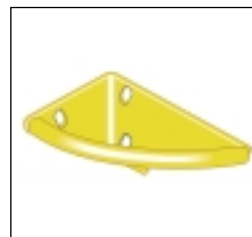
1. Portal Beams
space the frames into lanes and, with overhead bracing, provide stability.



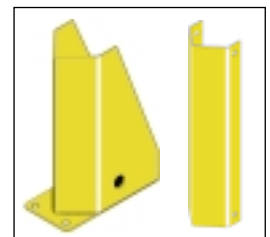
2. Pallet Guide Rails
provide the support for palletised loads within the drive-in lanes.



3. Rail Spacer Brackets
used to space the guide rails from the uprights for additional load clearance.



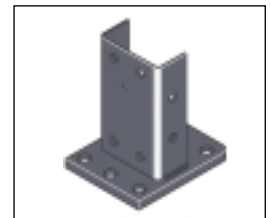
4. Rail Protector Noses
fitted to the guide rail entry points to protect against accidental impact.



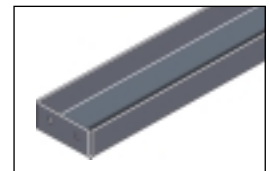
5. Lead-In/Protectors
protect the uprights against accidental impact and serve as lane guides.



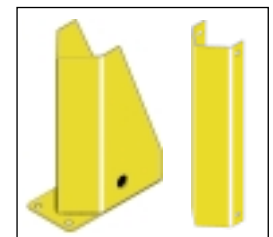
8. Frames
varying combinations of uprights and bracing to meet the load criteria.



7. Foot Plates
provides load-bearing stability and floor anchor points for the structure.



6. Guide Channels
provides guidance for the movement of forklift trucks and pallets in the lanes.



5. Lead-In/Protectors
protect the uprights against accidental impact and serve as lane guides.

finishes (guide)

- * standard
- † alternative
- ‡ alternative (delivery and cost conditions may apply)

* painted **Graphite Grey**
uprights, upright bracing

* painted **High Visibility Yellow**
beams, protectors

* **Pre-Galvanised**
rear & overhead bracing, rails

† painted **Light Grey**
uprights, upright bracing

‡ painted **Blue RAL 5001**
uprights, upright bracing

‡ painted **Orange RAL 2004**
uprights, upright bracing

‡ **Pre-Galvanised**
uprights, upright bracing



For further information on Moresecure products, please contact your local distributor:

Wensum Works,
150 Northumberland Street,
Norwich,
Norfolk,
NR2 4EE
Phone: +44 (0)1603 629956,
Fax: +44 (0)1603 630113

Email: sales@eseprojects.co.uk Web: www.eseprojects.co.uk

ESEPROJECTS
Design, Supply & Install Services