

Issue: 1  
 Issue Date: 070313

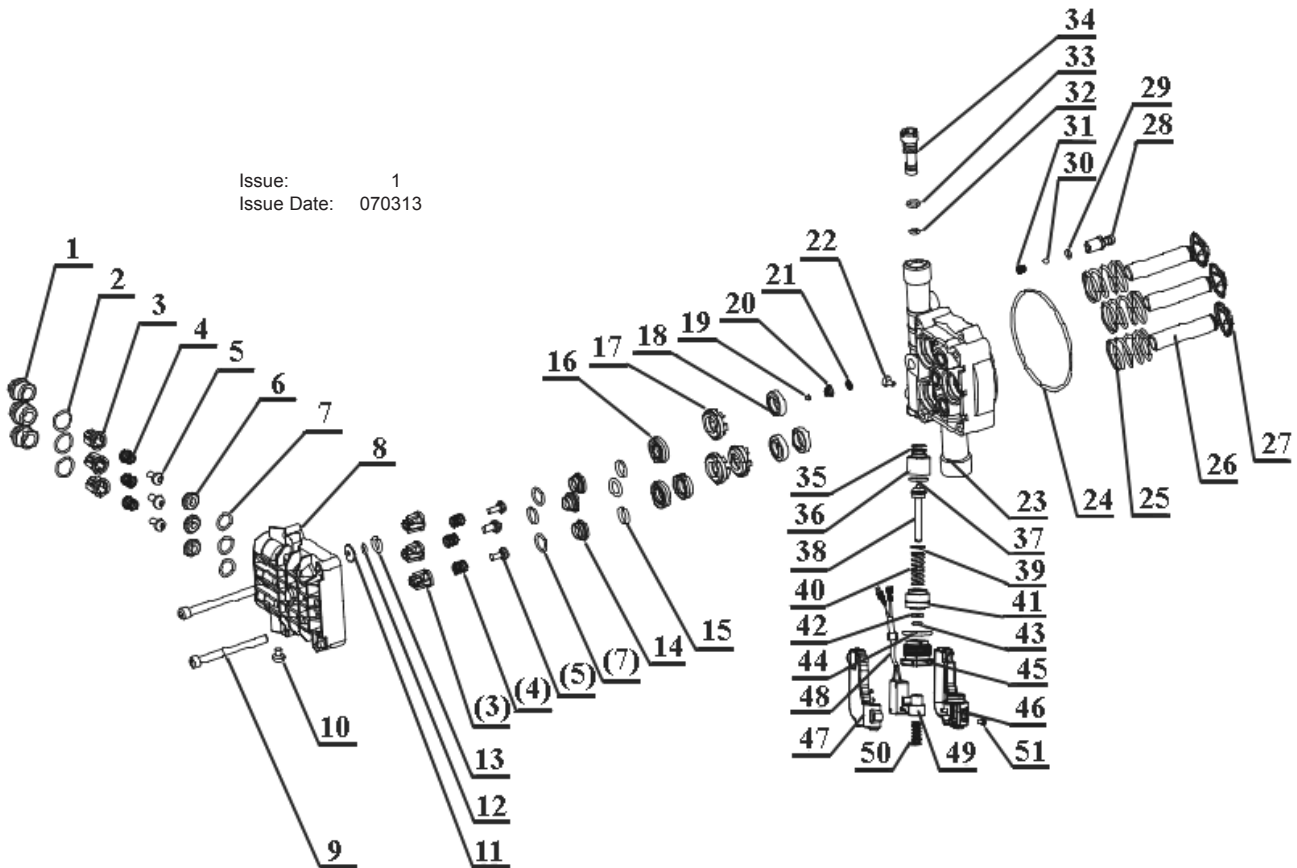
ITEM	PART NO	DESCRIPTION	ITEM	PART NO	DESCRIPTION	ITEM	PART NO	DESCRIPTION
1	PW2000.01	HANDLE COVER, FRONT	24	PW2000.24	HEX BOLT	45	PW2000.45	DETERGENT BOTTLE CAP
2	PW2000.02	FRONT COVER	25	PW2000.25	WATER INPUT FILTER	46	PW2000.46	DETERGENT BOTTLE
3	PW2000.03	FRONT COVER SIDE	26	PW2000.26	WATER INPUT SEAL	47	PW2000.47	DETERGENT BOTTLE HOSE
4	PW2000.04	FRONT LABEL	27	PW2000.27	WATER INPUT NUT	49	PW2000.49	MOTOR COVER
5	PW2000.05	SCREW	28	PW2000.28	O-RING	50	PW2000.50	MOTOR FAN
6	PW2000.06	SCREW	29	PW2000.29	MOTOR COVER	51	PW2000.51	SCREW
7	PW2000.07	POWER SWITCH	30	PW2000.30	SCREW	52	PW2000.52	CABLE GLAND
8	PW2000.08	SCREW	31	PW2000.31	SPRING WASHER	53	PW2000.53	CONNECTION BOX SEAL (SMALL)
9	PW2000.09	CONNECTION BOX COVER	32	PW2000.32	WASHER	54	PW2000.54	LOCK WASHER
10	PW2000.10	CONNECTION BOX SEAL	33	PW2000.33	BASE	55	PW2000.55	WASHER
11	PW2000.11	CAPACITOR	34	PW2000.34	BACK COVER	56	PW2000.56	SPRING WASHER
12	PW2000.12	CONNECTION BOX, BOTTOM	35	PW2000.35	WHEEL	57	PW2000.57	NEEDLE PROBE
13	PW2000.13	OUTLET CONNECTOR	36	PW2000.36	WHEEL SUPPORT	58	PW2000.58	LANCE FOR GUN
14	PW2000.14	OUTLET CONNECTOR SEAL	37	PW2000.37	WHEEL COVER	59	PW2000.59	PRESSURE GUN
16	PW2000.16	MOTOR ASS'Y	38	PW2000.38	SCREW	60	PW2000.60	HIGH PRESSURE HOSE
17	PW2000.17	HEX BOLT	39	PW2000.39	CABLE GRIP	62	PW2000.62	WATER INPUT HOSE
18	PW2000.18	SPRING WASHER	40	PW2000.40	POWER CORD	63	PW2000.63	QUICK CONNECTOR
19	PW2000.19	WASHER	41	PW2000.41	BASKET	64	PW2000.64	QUICK CONNECTOR
20	PW2000.20	CAMPLATE	42	PW2000.42	SIDE HOOK			
21	PW2000.21	BEARING ASS'Y	43	PW2000.43	SCREW			
23	PW2000.23	PUMP ASS'Y	44	PW2000.44	HANDLE COVER, BACK			

**NOTE:** It is our policy to continually improve products and as such we reserve the right to alter data, specifications and component parts without prior notice.

**IMPORTANT:** No liability is accepted for incorrect use of product.

**WARRANTY:** Guarantee is 12 months from purchase date, proof of which will be required for any claim.

Issue: 1  
 Issue Date: 070313



ITEM	PART NO	DESCRIPTION	ITEM	PART NO	DESCRIPTION
1	PW2000.P01	PLUG, ONE-WAY VALVE	27	PW2000.P27	BASE, SPRING BASE
2	PW2000.P02	O-RING (15.4*2)	28	PW2000.P28	CONNECTION HEAD
3	PW2000.P03	COVER, ONE-WAY VALVE	29	PW2000.P29	O-RING (4x1.5)
4	PW2000.P04	SPRING, ONE-WAY VALVE	30	PW2000.P30	STEEL BALL
5	PW2000.P05	PIN, ONE-WAY VALVE	31	PW2000.P31	SPRING
6	PW2000.P06	BASE, ONE-WAY VALVE OUTLET	32	PW2000.P32	O-RING (6.25x2.1)
7	PW2000.P07	O-RING (12.5x1.8)	33	PW2000.P33	O-RING (8.4x1.8)
8	PW2000.P08	PUMP COVER	34	PW2000.P34	DETERGENT HOSE
9	PW2000.P09	HEX BOLT (M6x45)	35	PW2000.P35	O-RING (9x1.8)
10	PW2000.P10	HEX BOLT (M6x8)	36	PW2000.P36	SLEEVE, RELIEF VALVE
11	PW2000.P11	BASE, ONE-WAY VALVE	37	PW2000.P37	O-RING (12x2)
12	PW2000.P12	O-RING (5x1.8)	38	PW2000.P38	PIN, RELIEF VALVE
13	PW2000.P13	O-RING (10x2.65)	39	PW2000.P39	LIMIT RING
14	PW2000.P14	BASE, ONE-WAY VALVE INLET	40	PW2000.P40	SPRING, RELIEF VALVE
15	PW2000.P15	O-RING (11x2)	41	PW2000.P41	MIDDLE SEAL, RELIEF VALVE
16	PW2000.P16	WATER SEAL	42	PW2000.P42	SEAL
17	PW2000.P17	SUPPORT, PLUNGER	43	PW2000.P43	O-RING (5.6x1.8)
18	PW2000.P18	OIL BLOCK	44	PW2000.P44	O-RING (19x2.65)
19	PW2000.P19	STEEL BALL	45	PW2000.P45	SCREW
20	PW2000.P20	SPRING, ONE-WAY VALVE	46	PW2000.P46	BOTTOM, SWITCH CASE
21	PW2000.P21	BASE SPRING, ONE-WAY VALVE	47	PW2000.P47	COVER, SWITCH CASE
22	PW2000.P22	SCREW (M6x6)	48	PW2000.P48	LEAD, MICRO SWITCH
23	PW2000.P23	PUMP BODY	49	PW2000.P49	BAR, SWITCH
24	PW2000.P24	O-RING (85x2.65)	50	PW2000.P50	SPRING, SWITCH CASE
25	PW2000.P25	SPRING, PLUNGER	51	PW2000.P51	SELF-TAPPING SCREW (ST2.9x9.5)
26	PW2000.P26	PLUNGER			

**NOTE:** It is our policy to continually improve products and as such we reserve the right to alter data, specifications and component parts without prior notice.

**IMPORTANT:** No liability is accepted for incorrect use of product.

**WARRANTY:** Guarantee is 12 months from purchase date, proof of which will be required for any claim.