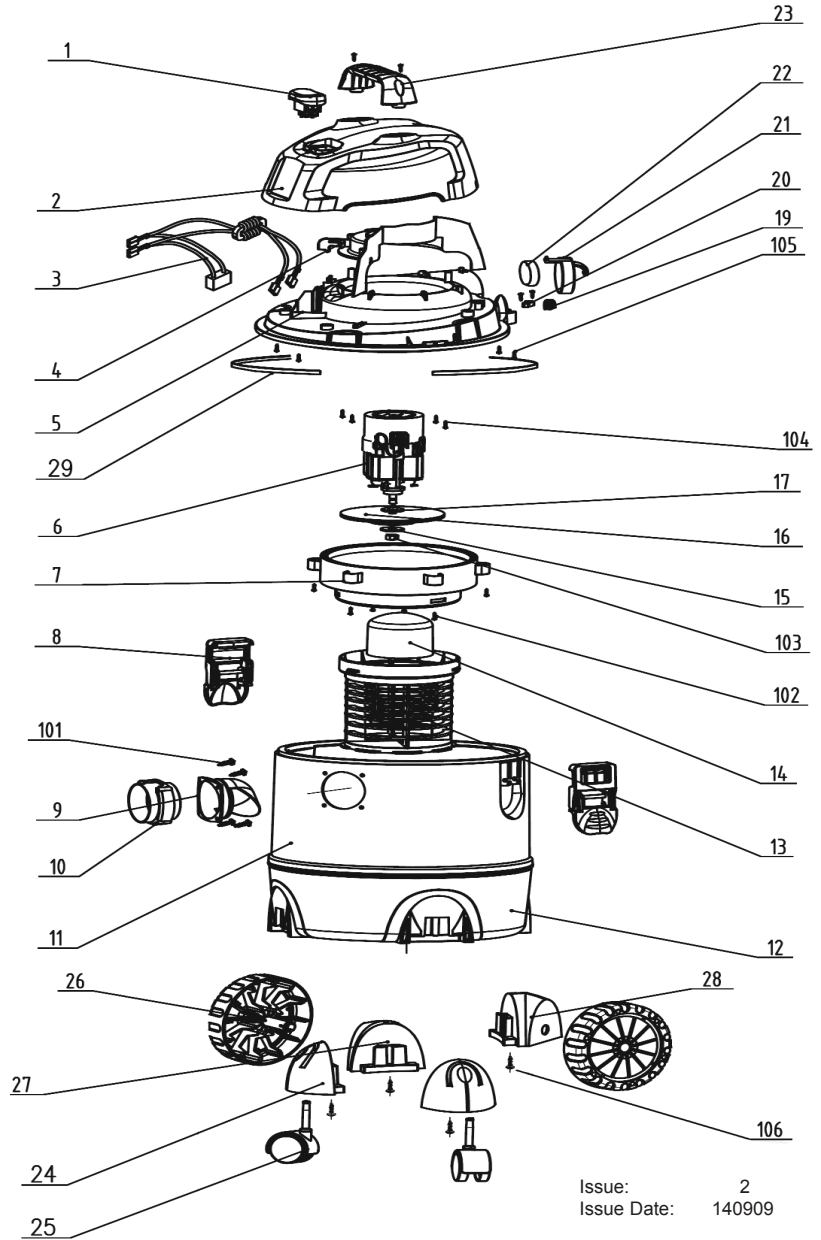


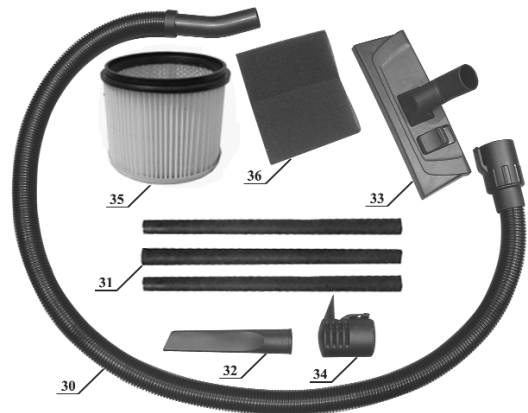
ITEM	PART NO	DESCRIPTION
1	PC200.V3-01	SWITCH
2	PC200.V3-02	UPPER COVER
3	PC200.V3-03	INDUCTANCE SET
4	PC200.V3-04	AIR OUTLET
5	PC200.V3-05	LOWER COVER
6	PC200.V3-06	MOTOR
7	PC200.V3-07	TRAY
8	PC200.V3-08	BIN CLIP
9	PC200.V3-09	HOSE INLET BASE
10	PC200.V3-10	HOSE INLET
11	PC200.V3-11	UPPER TANK
12	PC200.V3-12	LOWER TANK
13	PC200.V3-13	BASKET
14	PC200.V3-14	FLOAT
15	PC200.V3-15	BOARD
16	PC200.V3-16	FAN SET
17	PC200.V3-17	WASHER
19	PC200.V3-19	CORD SLEEVE
20	PC200.V3-20	CORD CLAMP
21	PC200.V3-21	FILTER COVER
22	PC200.V3-22	FOAM FILTER
23	PC200.V3-23	HANDLE
24	PC200.V3-24	FOOT SUPPORT
25	PC200.V3-25	CASTOR
26	PC200.V3-26	WHEEL (BIG)
27	PC200.V3-27	FOOT SUPPORT
28	PC200.V3-28	FOOT SUPPORT
29	PC200.V3-29	FOAM RING
101	PC200.V3-101	SCREW (ST3.9x14)
102	PC200.V3-102	SCREW (ST3.9x16)
103	PC200.V3-103	NUT M8
104	PC200.V3-104	SCREW (ST4.2 x 12F)
105	PC200.V3-105	SCREW (ST3.9 x 16F)
106	PC200.V3-106	SCREW (ST4.2 x 16F)



Issue: 2  
 Issue Date: 140909

### ACCESSORIES

ITEM	PART NO	DESCRIPTION
30	PC200.V3-30	HOSE 1.5m
31	PC200.V3-31	EXTENSION TUBE (set of 3)
32	PC200.V3-32	CREVICE TOOL
33	PC200.V3-33	FLOOR BRUSH
34	PC200.V3-34	NOISE DIFFUSER MUFFLER
35	PC200CFL	LOCKING CARTRIDGE FILTER
36	PC200FF10	FOAM FILTERS (pk of 10)
37	PC200PB5	DUST COLLECTION BAGS (optional) (pk of 5) (not shown)



**NOTE:** It is our policy to continually improve products and as such we reserve the right to alter data, specifications and component parts without prior notice.

**IMPORTANT:** No liability is accepted for incorrect use of product.

**WARRANTY:** Guarantee is 12 months from purchase date, proof of which will be required for any claim.

**INFORMATION:** For a copy of our latest catalogue and promotions call us on 01284 757525 and leave your full name and address, including postcode.