

Thank you for purchasing a Sealey product. Manufactured to a high standard this product will, if used according to these instructions and properly maintained, give you years of trouble free performance.



IMPORTANT: PLEASE READ THESE INSTRUCTIONS CAREFULLY. NOTE THE SAFE OPERATIONAL REQUIREMENTS, WARNINGS & CAUTIONS. USE THE PRODUCT CORRECTLY AND WITH CARE FOR THE PURPOSE FOR WHICH IT IS INTENDED. FAILURE TO DO SO MAY CAUSE DAMAGE AND/OR PERSONAL INJURY, AND WILL INVALIDATE THE WARRANTY. PLEASE KEEP INSTRUCTIONS SAFE FOR FUTURE USE.

1. SAFETY INSTRUCTIONS

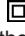
1.1 ELECTRICAL SAFETY

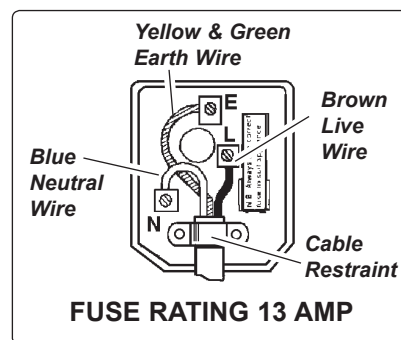
It is the responsibility of the owner and the operator to read, understand and comply with the following:

You must check all electrical products, before use, to ensure that they are safe. You must inspect power cables, plugs, sockets and any other connectors for wear or damage. You must ensure that the risk of electric shock is minimised by the installation of appropriate safety devices. A Residual Current Circuit Breaker (RCCB) should be incorporated in the main distribution board. We also recommend that a Residual Current Device (RCD) is used. It is particularly important to use an RCD with portable products that are plugged into a supply which is not protected by an RCCB. If in any doubt consult a qualified electrician. You may obtain a Residual Current Device by contacting your Sealey dealer.

You must also read and understand the following instructions concerning electrical safety.

- 1.1.1 The **Electricity at Work Act 1989** requires that all portable electrical appliances, if used on business premises, are tested by a qualified electrician, using a Portable Appliance Tester (PAT), at least once a year.
- 1.1.2 The **Health & Safety at Work Act 1974** makes owners of electrical appliances responsible for the safe condition of those appliances and the safety of the appliance operators. **If in any doubt about electrical safety, contact a qualified electrician.**
- 1.1.3 Ensure that the insulation on all cables and on the appliance is safe before connecting it to the power supply. See 1.1.1. and 1.1.2. and use a Portable Appliance Tester.
- 1.1.4 Ensure that cables are always protected against short circuit and overload.
- 1.1.5 Regularly inspect power supply cables and plugs for wear or damage and check all connections to ensure that none are loose.
- 1.1.6 **Important:** Ensure that the voltage marked on the appliance matches the power supply to be used and that the plug is fitted with the correct fuse - see fuse rating at right.
- 1.1.7 **DO NOT** pull or carry the appliance by the power cable.
- 1.1.8 **DO NOT** pull the plug from the socket by the cable.
- 1.1.9 **DO NOT** use worn or damaged cables, plugs or connectors. Immediately have any faulty item repaired or replaced by a qualified electrician. When a BS 1363/A UK 3 pin plug is damaged, cut the cable just above the plug and **dispose of the plug safely.** Fit a new plug according to the following instructions (UK only).
 - a) **Connect the GREEN/YELLOW earth wire to the earth terminal 'E'.**
 - b) **Connect the BROWN live wire to the live terminal 'L'.**
 - c) **Connect the BLUE neutral wire to the neutral terminal 'N'.**
 - d) **After wiring, check that there are no bare wires, that all wires have been correctly connected, that the cable outer insulation extends beyond the cable restraint and that the restraint is tight.**

Double insulated products, which are always marked with this symbol , are fitted with live (brown) and neutral (blue) wires only. To rewire, connect the wires as indicated above - **DO NOT** connect either wire to the earth terminal.
- 1.1.10 Products which require more than 13 amps are supplied without a plug. In this case you must contact a qualified electrician to ensure that a suitably rated supply is available. We recommend that you discuss the installation of an industrial round pin plug and socket with your electrician.
- 1.1.11 If an extension reel is used it should be fully unwound before connection. A reel with an RCD fitted is preferred since any appliance plugged into it will be protected. The cable core section is important and should be at least 1.5mm², but to be absolutely sure that the capacity of the reel is suitable for this product and for others which may be used in the other output sockets, we recommend the use of 2.5mm² section cable.



1.2 GENERAL SAFETY

- ✓ Disconnect the machine from the power supply before servicing, changing accessories, or performing any maintenance.
- ✓ Use only genuine parts and accessories. Unauthorised parts and accessories may be dangerous and will invalidate your warranty.
- ✓ Maintain the machine in good condition. Use an authorised agent for servicing. Keep machine clean, but **DO NOT** use solvents.
- ✓ Ensure the correct Sealey cartridge filter is firmly in place before operating the machine. Wrong cartridge filter may cause machine faults and will invalidate your warranty.
- x **DO NOT** allow children or untrained persons to operate the machine.
- x **DO NOT** place attachments close to your face (especially eyes, ears, etc). Do not point the hose end at other persons or animals.
- ▲ **DANGER!** **DO NOT** vacuum hot or glowing ash, cigarette ends, inflammable, explosive, corrosive or other dangerous substances.
- x **DO NOT** operate the unit without the cartridge filter in place. (See section 5 regarding cartridge filters)
- x **DO NOT** leave machine running unattended. Turn power supply OFF, and **DO NOT** leave the vicinity until motor has come to a complete stop.
- x **DO NOT** operate the cleaner while under the influence of drugs, alcohol or impairing medication, or if you are tired.
- x **DO NOT** use the cleaner in the rain or in very damp conditions.
- ✓ When not in use, store the cleaner in a safe, dry, childproof location.
- x **DO NOT** use the cleaner for a task it is not designed to perform.
- ✓ Wear protective clothing and gloves.

2. INTRODUCTION

Cleans carpets, car interiors, fabrics and upholstery. Constructed from high impact plastic which is dent resistant and rust proof. Supplied complete with carpet lance, hand-held lance, full wet and dry vacuum accessory kit, including stainless steel telescopic rigid extension tube, cartridge filter and foam filter. Powerful pump forces cleaning fluid into fabric/carpet and 1250Watt suction power leaves surface virtually dry after one pass. Features safety shut-off for wet operation. Large capacity drum with external detergent tank for easy filling. Fitted with two fixed wheels and two castors. Cable storage hook, accessories and extension tube holders on head plus additional accessory stowage slots on base.

3. CONTENTS AND SPECIFICATION

Model No: PC310
 Motor: 1250W
 Supply: 230V, 50Hz
 Drum Size: 20ltr
 Weight: 10kg
 Filter - Dry: Cartridge
 Filter - Wet Foam
 Replacement Cartridge Filter: PC310CF

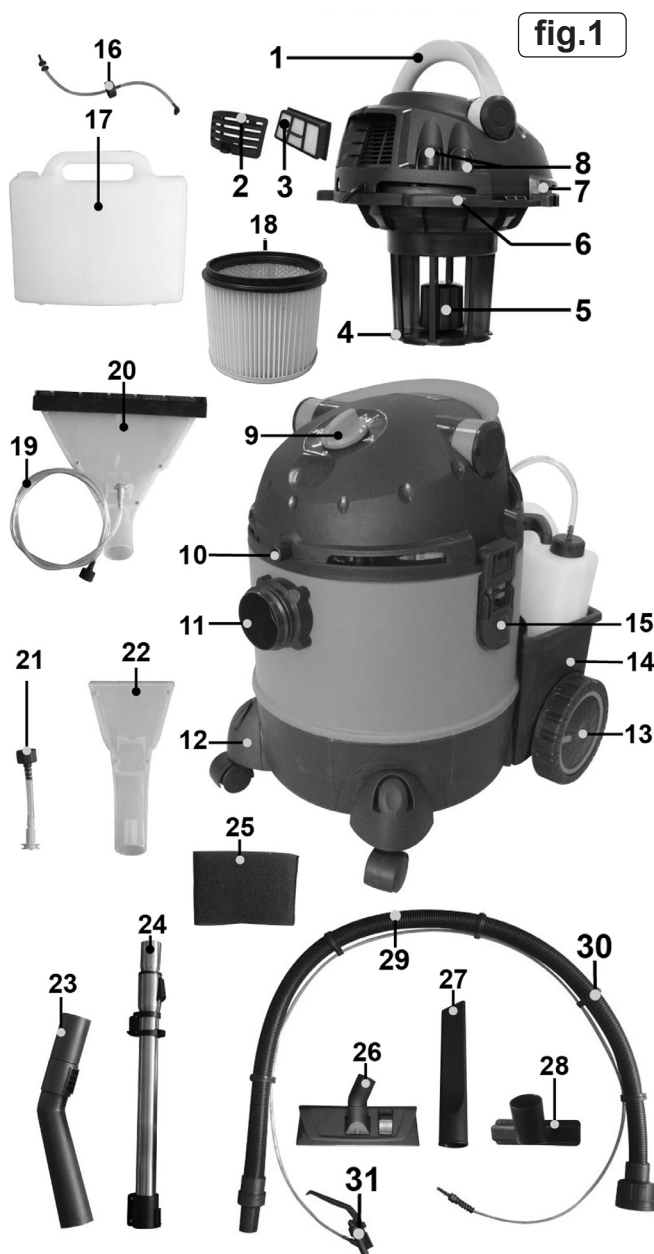


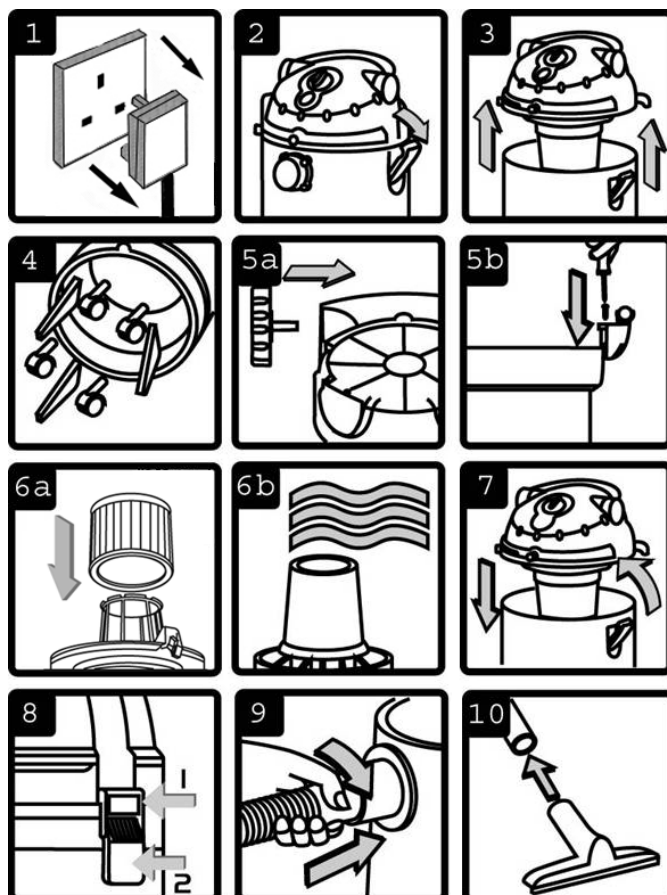
fig.1

ITEM DESCRIPTION

1	Handle.	16	Rear shampoo tank connecting tube
2	Exhaust outlet cover for HEPA filter	17	Shampoo tank.
3	HEPA filter	18	Cartridge filter.
4	Shut-off valve basket.	19	Shampoo pipe for large wash head
5	Floating cup valve.	20	Large shampoo head
6	Cable storage hook	21	Shampoo spraying nozzle
7	Accessory storage position	22	Small shampoo head
8	Extension tube holder	23	Air flow regulator
9	Main switch	24	Extension tube
10	Shampoo pump outlet nozzle	25	Foam filter
11	Vacuum hose inlet.	26	Combo floor brush
12	Castor in castor mounting with accessory storage.	27	Crevice tool
13	Rear wheels.	28	Small utility nozzle
14	Rear storage container	29	Suction hose, and shampoo delivery tube assembly
15	Clasp. (x2)	30	Tube clip
		31	Sprayer trigger

4. ASSEMBLY

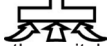
- 4.1 Do not connect the mains plug yet.
- 4.2-3 Undo tank clasps and lift off the top section assembly.
- 4.4 Remove contents from inside the tank. Check and identify each component as listed in fig.1. If anything is missing or damaged please contact your supplier immediately.
- 4.5a Insert a large wheel on each side of the rear basket and ensure they are pushed all the way in.
- 4.5b Turn the tank upside down and insert the moulded castor mountings into their positions in the black base. Retain each castor moulding with the self tapping screws provided.
- 4.6a For dry suction fit the cartridge filter.
- 4.6b For carpet washing or wet suction fit the foam filter.
- 4.7 Re-assemble the top to the tank.
- 4.8 Fasten the 2 clasps.
- 4.9 Attach the suction hose to the suction inlet on the front of the tank.
- 4.10 Push the end of the suction hose into the air diffuser handle. See fig.1-23. Push the end of the air difusser handle into the telescopic extension tube. Fit the required accessory to the base of the extension tube or directly to the difuser handle if the extension tube is not required.

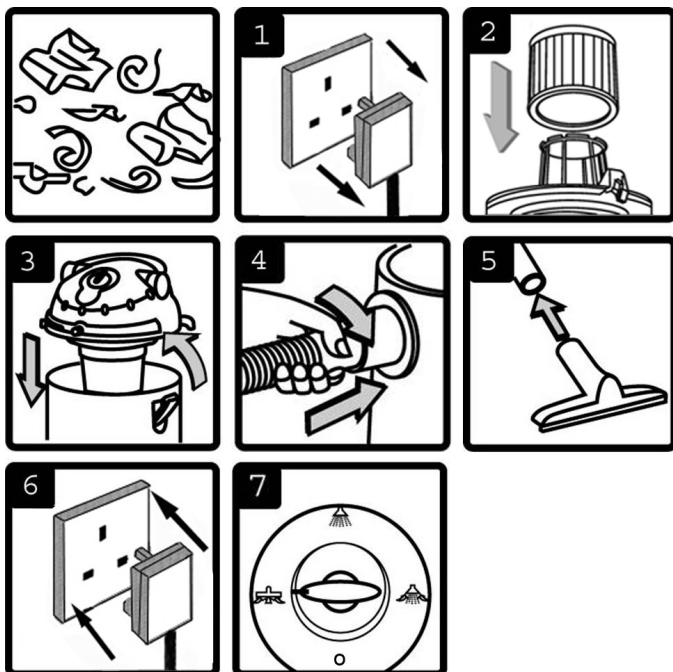


5. USING A CARTRIDGE FILTER


- ❑ **WARNING!** Always disconnect the plug from the mains supply before removing the tank cover.
- 5.1 **IMPORTANT:** The filter is made of high quality paper designed to filter small particles of dust. **We Recommend that this filter be used for dry vacuuming only.**
 - 5.1.1 The filter must be completely dry when used to collect dry dust as a wet or damp filter will clog quickly and be very difficult to clean.
 - 5.1.2 Check the filter carefully and regularly for tears or small holes. Even a small hole can cause dust to be exhausted. Never use a filter with holes or tears as this may cause damage to the motor and invalidate warranty. Replace it immediately.
- 5.2 **INSTALLING & CLEANING**
 - 5.2.1 Slide cartridge filter down over filter cage.
 - 5.2.2 Hold the base rim of the filter and gently push and twist it until the top rim fits snug against the lid assembly. Ensure there is no gap between filter and lid assembly.
 - 5.2.3 To remove filter for cleaning, hold the base of the filter and gently pull it off the cage.
 - 5.2.4 Clean dry filter by tapping it on inside of waste can.

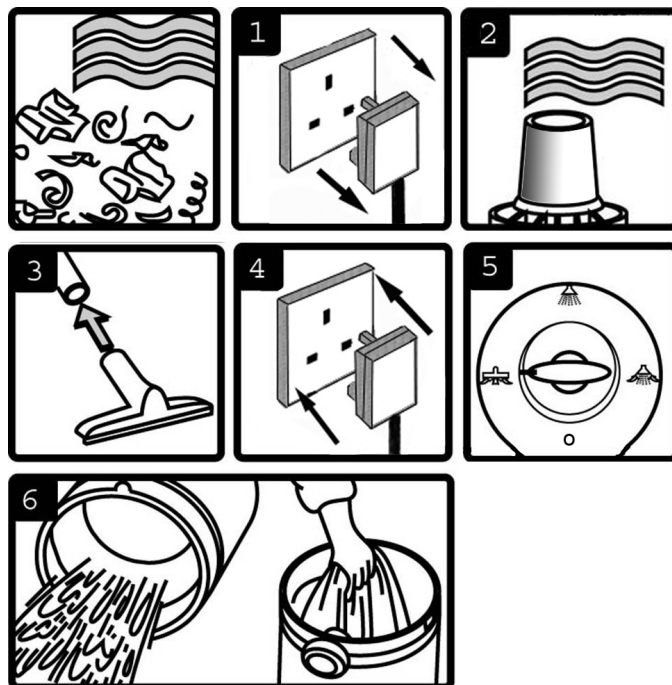
6. DRY VACUUM CLEANING

- ❑ **WARNING!** Ensure you read, understand and apply Section 1 'Safety Instructions'.
Reminder: **DO NOT** vacuum hazardous substances. Use of an incorrect cartridge filter will invalidate your warranty.
- 6.1 Ensure the machine is unplugged from the power supply.
- 6.2 Fit the cartridge filter down over the basket and push it fully home.
- 6.3 Re-position the head onto the tank, and clip in place.
- 6.4 Insert the larger end of the flexible hose into the front inlet on the tank and lock in place.
- 6.5 Push the required attachment onto the free end of the hose.
- 6.6 Plug into the power supply.
- 6.7 Switch the motor to vacuum only (position: ).
- 6.8 When you have completed vacuuming, turn the switch to the 'Off'. (position 'O'), and unplug from power supply.



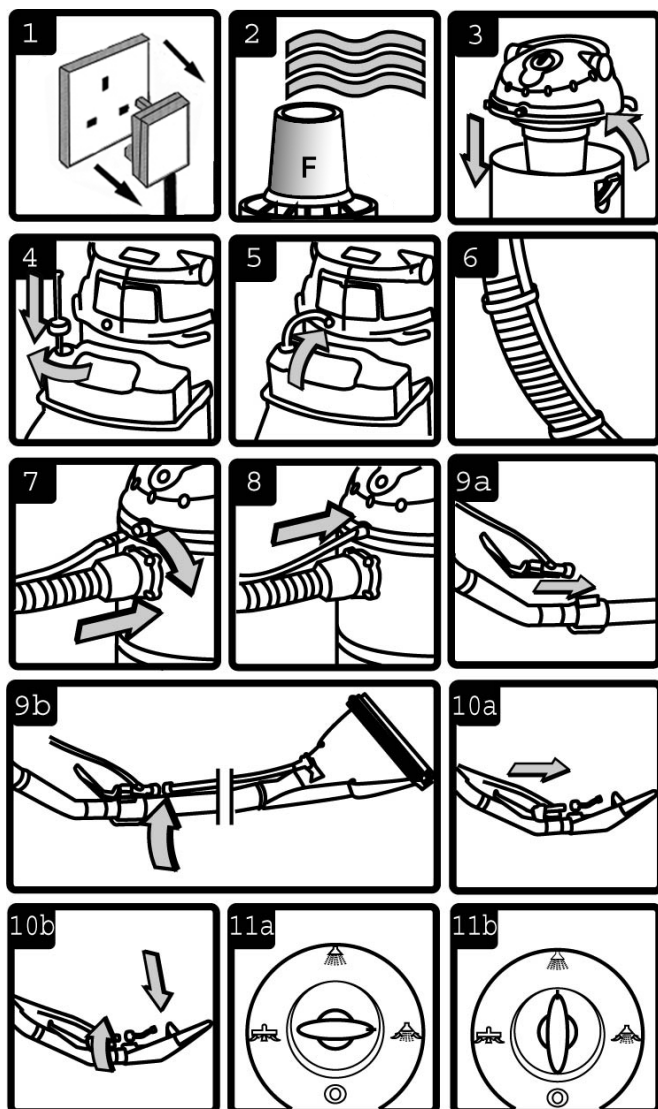
7. WET VACUUM CLEANING

- ❑ **WARNING!** Ensure you read, understand and apply Section 1 'Safety Instructions'. **Reminder: Remove plug from power supply before opening unit. DO NOT vacuum solvents, explosives, inflammable and/or hazardous liquids such as petrol, oil, spirits, paint, thinners, acids etc. Use of an incorrect filter will invalidate your warranty.**
- 7.1 Ensure the machine is unplugged from the power supply. Make sure the tank is clean and free from dust and dirt.
- 7.2a For wet vacuum cleaning the foam filter must be used.
- 7.2b when using the foam filter first remove any cartridge filter fitted. Ensure the foam filter is clean and dry. Place the foam filter over the filter cage and adjust carefully.
- 7.3 Fit the required accessories or tubes to the suction hose.
- 7.4 Ensure the switch is 'Off' (position 'O') before plugging into the power supply.
- 7.5 Switch to the 'On' (position: ).
- 7.6 When you have completed vacuuming, turn the switch to the 'Off' (position 'O'), and unplug from power supply.
- 7.7 After use, empty the tank and dry.
- ❑ **WARNING!** The tank is not designed for liquid storage. Always empty liquids after use. Never store the cleaner with liquid in the tank.



- 7.8 To vacuum large quantities of liquid, from a sink or tank etc., do not immerse the nozzle completely in the liquid; leave a gap at the top of the nozzle opening to allow an air inflow. The machine is fitted with a float valve which blocks the suction action when the tank has reached its maximum capacity. The user will notice an increase in motor noise. When this happens, turn off the machine, disconnect from power supply, remove the head from the tank and empty the liquid into a suitable receptacle or drain. To continue vacuuming, refit the head and proceed. After wet vacuuming, turn the machine off and remove plug from power supply. Empty the tank and clean/dry the inside and outside before storage.

8. CARPET CLEANING





8.1 SET-UP

Water, mixed with a suitable carpet shampoo solution, is pumped deep into the fibres of the carpet via the shampoo application nozzle. The dirty liquid is then sucked back into the waste tank along with the dirt and grime dislodged by the cleaning solution. Water can be pumped up to 2 meters above the machine so that stairs may also be shampooed.



- ❑ **WARNING!** Ensure you read, understand and apply Section 1 'Safety Instructions'.

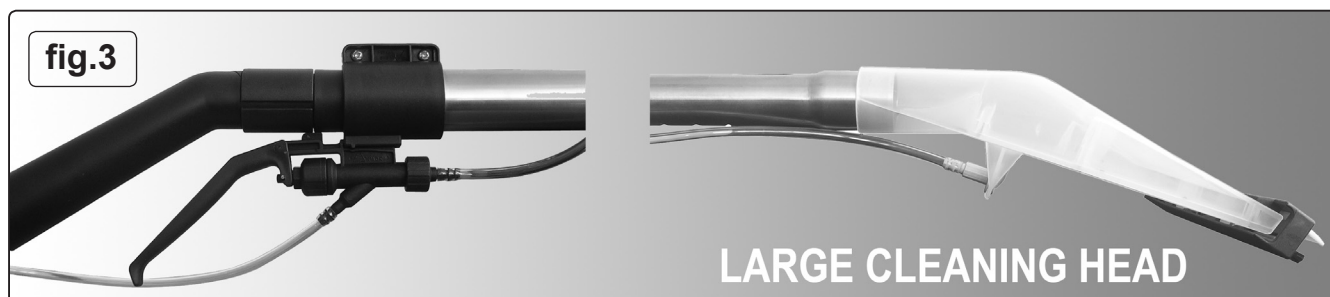
Reminder: **DO NOT** vacuum hazardous substances.

- 8.1.1 Ensure the machine is unplugged from the power supply.
- 8.1.2 Fit the foam filter (F).
- 8.1.3 Reposition the head onto the tank body and clip in place.
- 8.1.4 Ensure that the shampoo solution has been mixed with the recommended proportion of water and pour it into the shampoo tank. Insert the shampoo tank connecting tube and filter (fig.1-16) into the tank and push the cap onto the tank filler neck to avoid any shampoo splashing out whilst working.
- 8.1.5 Plug the nozzle on the other end of the shampoo tank connecting tube into the shampoo inlet hole on the rear of the motor housing below the HEPA filter exhaust cover. (fig.1-2)
- 8.1.6 Ensure that the transparent shampoo delivery tube is fitted correctly around the suction hose and held in place with the clips provided. See also fig.1-29.
- 8.1.7 Screw the large threaded connector on the end of the flexible suction hose to the vacuum inlet on the front of the tank.
- 8.1.8 Push the connector on the end of the shampoo delivery tube into the shampoo outlet nozzle on the front of the motor housing.
- 8.1.9 Slide the spraying trigger fitting into the mount at the top of the extension tube. Push gently and ensure it clicks into place. Fit the large washing head to the extension tube. Connect the shampoo delivery tube from the head to the trigger. The black fitting is a push and twist fit. See also fig.3.
- 8.1.10 The spraying nozzle at the other end of the delivery tube is a push fit into the mounting on the underside of the head. There is a notch in the nozzle which must fit onto a spigot in the head mounting to ensure that the nozzle outlet is the right way round.
To clean fabrics and upholstery See fig.2. Clip the spray nozzle with the short tube (See fig.1-21) into the underside of the small cleaning head. Then attach the trigger directly to the mounting on the underside of the small head. Push the assembled head onto the air diffuser handle. Note: The metal extension tube is not used.
- 8.1.11 Select the switch to position  , to operate the pump for shampoo application only.
Select the switch to position  , for simultaneous shampoo application and dirty liquid suction.
- 8.1.12 Squeeze the trigger to apply shampoo to the area to be washed.

8.2 CARPET CLEANING

Vacuum the carpet thoroughly before washing it. For best results we recommend you first remove all furniture from the room to be cleaned, or move it away from the cleaning area. Clean the whole carpet systematically in squares of approx. 1.5m each. This avoids walking over the cleaned carpet until it completely dry.

- 8.2.1 Start furthest away from the doorway to the room, extend the hose and work backwards.
- 8.2.2 Switch to position  , and squeeze the trigger to spray shampoo into the area to be cleaned.
- 8.2.3 Squeeze the trigger as you pull the head back towards you, in lengths of approx 1.5m. Refill the tank if the fluid spray stops.
- 8.2.4 Switch off and return to where you started.
- 8.2.5 Switch to position  , to suck up the dirty solution and repeat the previous pattern of strokes. Apply more shampoo in any particularly dirty area. The dirty solution is visible as it is sucked up through the transparent head. Stop vacuuming when there is no more dirty fluid visible.
- 8.2.6 Do not walk over any newly cleaned area until it is completely dry.
- 8.2.7 The small washing head is ideal for cleaning sofas, chairs, stairs and car interiors.



- ❑ **WARNING! DO NOT** replace furniture until the carpet is completely dry!
- ❑ **WARNING! DO NOT** run the pump when there is no shampoo in the tank!
- ❑ **WARNING!** The motor noise changes to a higher pitch when the tank is full or blocked. Stop the machine immediately and empty the water tank.
- ❑ **WARNING!** Always use a low foam shampoo or use a de-foaming agent.

8.3 STORAGE:

Prior to storage, following steps should be taken:

- 8.3.1 Remove the shampoo head and use the end of the extension tube to suck up any remaining liquid. Run the vacuum cleaner until the tubes and hose are clean and dry.
- 8.3.2 Switch off the unit and unplug the unit from the power supply. Then empty the main tank and shampoo tank.
- 8.3.3 Remove the foam filter to dry. Refit for further wet suction. For dry vacuuming you must fit a dry cartridge filter.

9. MAINTENANCE

9.1 GENERAL MAINTENANCE.

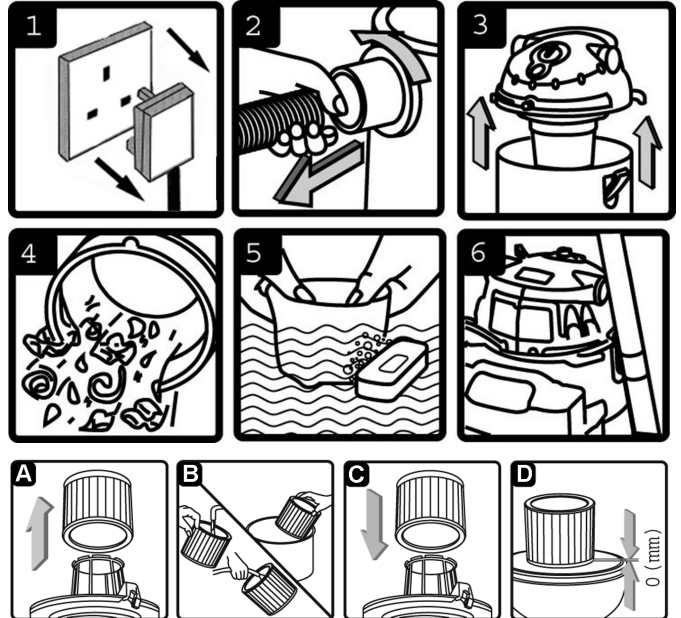
- 9.1.1 Ensure the machine is unplugged from the power supply.
- 9.1.2 Disconnect the hose from the container.
- 9.1.3 Undo the clasps and remove motor head from the container.
- 9.1.4 Clear out any dirt or debris from the container and hose.
- 9.1.5 Clean the foam filter by washing it in a mild soapy solution.
- 9.1.6 Check that the telescopic suction tube operates smoothly, and check the power cable to make sure it has not received any damage.

9.2 CARTRIDGE FILTER MAINTENANCE. (See also section 5)

- 9.2.1 Handle the filter carefully when cleaning or installing.
- 9.2.2 Carefully remove the cartridge filter (A) and inspect it for damage.

A filter that has small holes or tears in it will not perform efficiently and should be replaced.

- 9.2.3 To clean a dry filter, tap it inside a waste bin. (B)
- 9.2.4 Do not use a wet cartridge filter for dry vacuuming as the filter will clog quickly. To clean a wet cartridge filter it should be rinsed from the inside (B) and allowed to air dry for 24 hours.
- 9.2.5 To fit a new/cleaned filter slide it over the filter basket (C) and push it fully home (D).



10. TROUBLESHOOTING

Cleaner will not operate.	No power supply. Faulty power cable, switch or motor. Container full of liquid.	Check supply. Check and repair or replace faulty item. Empty container.
Dust comes from the motor cover.	Filter missing or damaged.	Fit or replace dust filter.
Reduced efficiency and increased motor speed/vibration.	Filter clogged. Nozzle, hose or container inlet blocked.	Clean or replace filter. Check nozzle, hose and container inlet for blockage.
No solution spraying out.	Switch on wrong position. Shampoo tank is empty. Incorrectly fitted trigger or pipes.	Turn switch to the required position. Add more shampoo. Check fittings and connections. Ensure there are no kinks in tubes.

11. CONSUMABLES

Cartridge Filter (Must be used for dry vacuuming) Model No. PC310CF

Foam Filter (Pack of 10) Model No. PC200FF10

IMPORTANT! IF THE MACHINE IS USED WITHOUT A CARTRIDGE FILTER FITTED THE MOTOR WILL BURN OUT EVENTUALLY AND YOUR GUARANTEE WILL BE INVALIDATED. ALWAYS KEEP A SPARE CARTRIDGE FILTER HANDY.

Dust Bags (Pack of 5) Optional Extra Model No. PC200PB5

NOTE: It is our policy to continually improve products and as such we reserve the right to alter data, specifications and component parts without prior notice.

IMPORTANT: No liability is accepted for incorrect use of this product.

WARRANTY: Guarantee is 12 months from purchase date, proof of which will be required for any claim.

INFORMATION: For a copy of our latest catalogue and promotions call us on 01284 757525 and leave your full name and address, including postcode.

